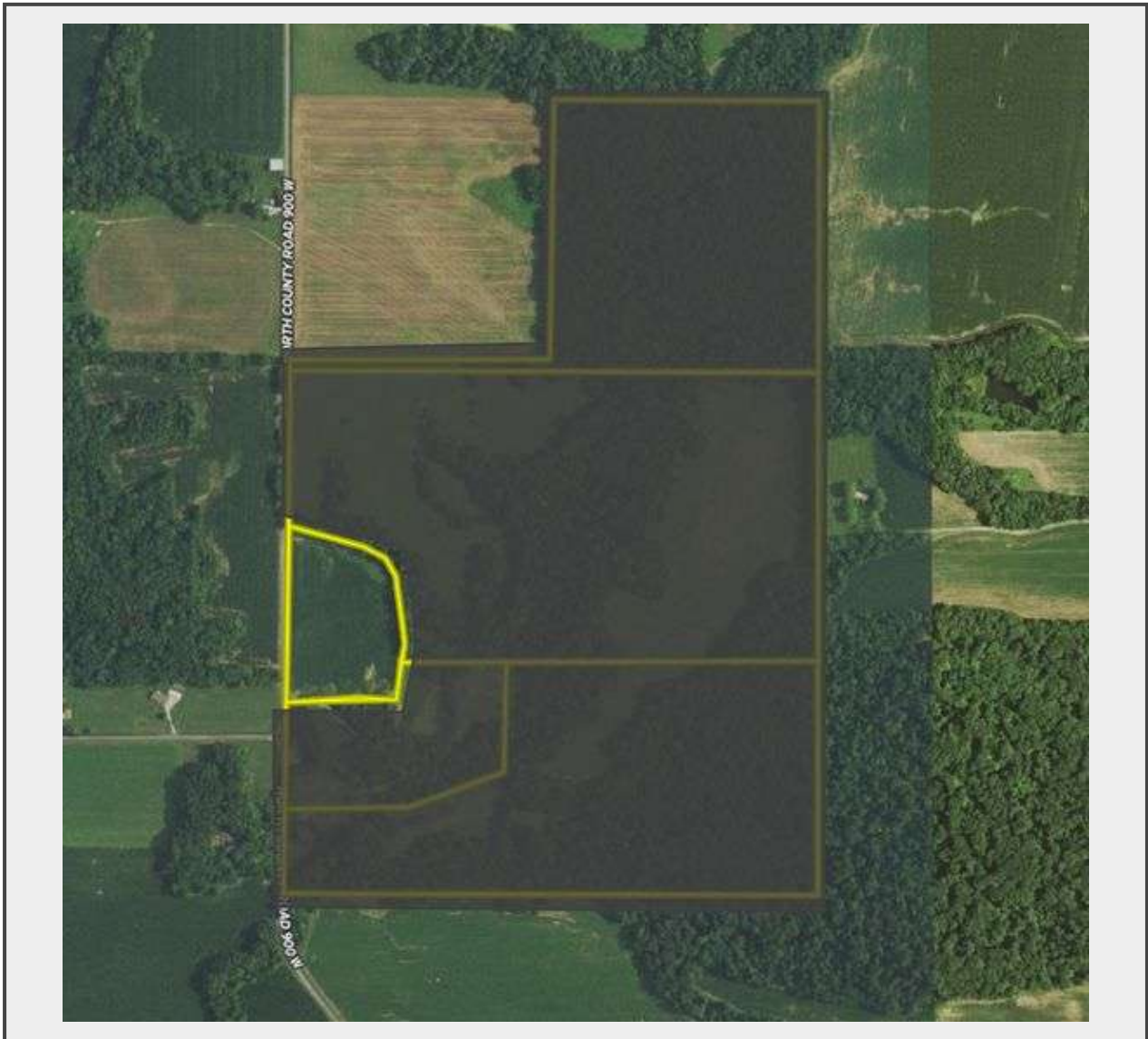


Sale Name: 799 +/- Acres Sullivan County Online Auction

LOT 6 - 10 +/- ACRES



Description

9 +/- Cropland Acres

Surety WAPI 124.5

Potential Homesite

Open Lease for 2024

The farm is being sold subject to an existing 50/50 crop share lease for the 2023 crop year.

If tract sold individually, or in combinations, will require new survey.

See Terms & Conditions for details.

Quantity: 1



<https://auctions.gfarmland.com/>