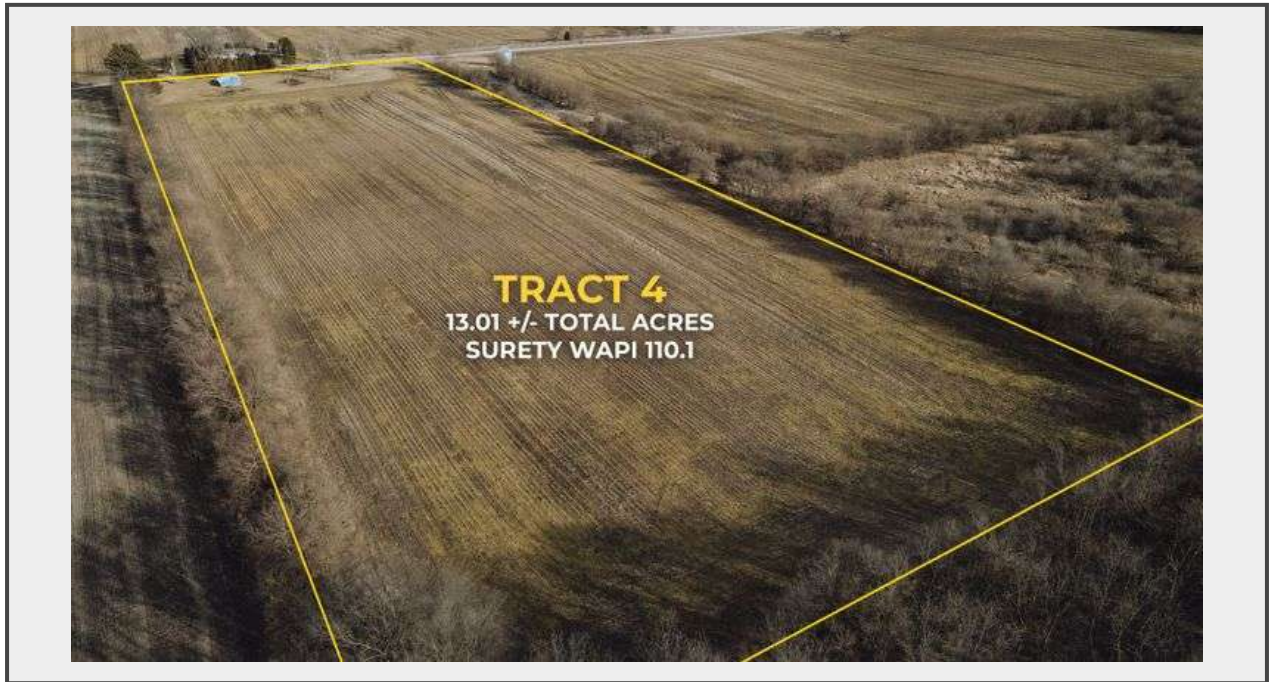


Sale Name: 188 +/- Acres in Five Tracts - Jasper County Auction

LOT 4 - Tract 4 - 13.01 +/- Acres



Description

13.01+ / - ACRES

NEWTON TOWNSHIP / JASPER COUNTY

- Productive Tillable Acres
- Weighted Average Productivity Index: 110.1
- +/- 10.69 Tillable Acres
- Investigate Potential Homesites
- 26'x32' Covered Structure
- 27'x30' Pole Barn

Quantity: 1



<https://auctions.gfarmland.com/>