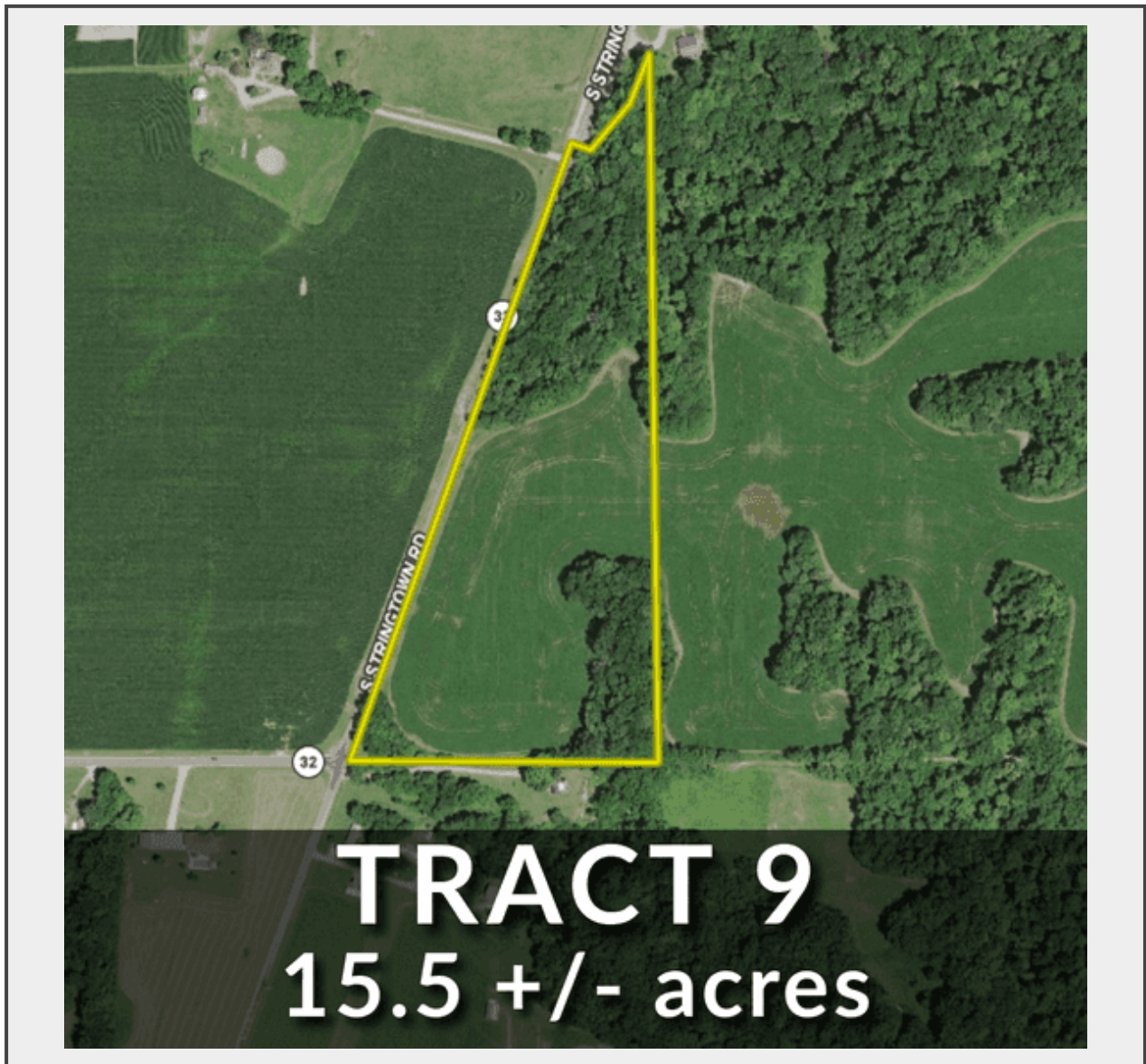


Sale Name: 406 +/- Acres Fountain County Tillable, Timber, Pasture, & Farmhouse

LOT 9 - 15.5 +/- Acres



Description

- Productive Tillable Farmground
- 119.73 +/- FSA Crop Acres
- High Quality Soils
- Surety WAPI 166.7
- SR 32 Road Frontage
- Approximately 3,320 ft of Road Frontage
- Excellent Investment Opportunity

Quantity: 1



<https://auctions.gfarmland.com/>